

FERTILL



Localise
Fertilize
liquid or solid

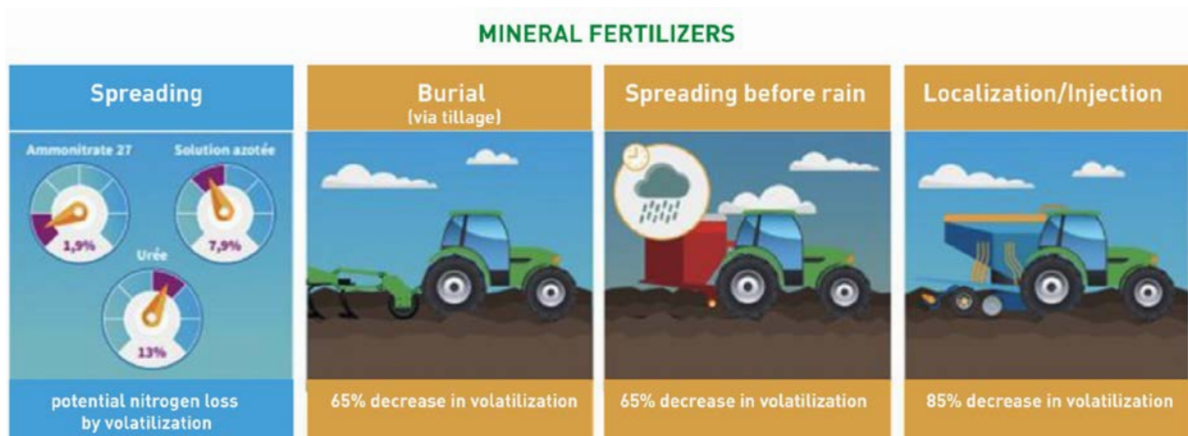


FERTILL

WHY LOCALISE ?

The fertilizing elements are placed close to the active zone (from the microbiological point of view), allowing the roots to reach them. Fertilization is thus more effective.

- It reduces or even eliminates the risk of ammonia volatilization.
- It reduces the risk of losses by runoff and erosion.
- It reduces the emanation of odors.
- It breaks the preferential flow channels (retreat slots).
- Avoid burning vegetation



Source: l'action agricole picarde



The right
DOSE



At the right
TIME



At the right
PLACE

1 UNIT 4 POSSIBILITIES

The frame as well as the inter-rows are modular.

In order to adapt to the different widths and inter-rows of precision planters, we have studied 4 fertilization configurations, which can be upgraded.

- **simple** unit
1 inter-row
on 2



- **twin** unit
1 inter-row
on 2



- **simple** unit
every
inter-row



- **twin** unit
every
inter-row



THE UNIT

This disc injector, mounted on a parallelogram damped on air unit is guided by an oscillating arm. This allows to work at high speeds even in the presence of residue. Single or twin row elements make it possible to adapt perfectly to each spacing.



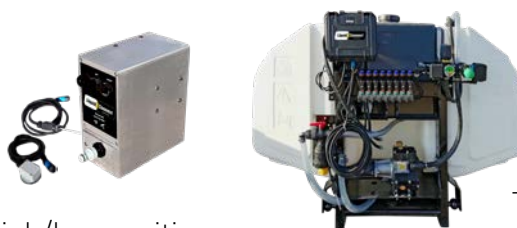
Simple row unit

Twin row unit

FERTILIZATION KITS

■ Régulation LiquidXConnect

- 2 models, 15 or 75 l/mn (combinable)
- Fittings, couplings, direct battery socket, high/low position sensor
- GPS and on/off switch
- Software for Android
- 1 pump: tablet 8", with cabin mount bracket and a carrying bag
- 2 pumps: tablet 10", with cabin mount bracket, a carrying bag and an electronic connexion case



Tablet with app fertilization management



■ Tank



Available capacity 700, 1100 (rinse tank 125l), 1200 (rinse tank 135l), 1500 (rinse tank 150l), 1850 two product (750+1050l, rinse tank 125l), 2200L (rinse tank 250l)
Delivered with hand washing tank, homologated NF EN ISO 4254-6

■ Liquid fertilization kit

Wilger ball flow indicators
Included in the kit:

- filter
- pressure gauge
- manifold
- one set of nozzle
- 8m hose for connexion
- additional connector hose under the tractor



■ Solid fertilization kit

- manifold Ø 100
- 1 hose per unit
- air release
- assembly on Fertill



CHASSIS

Mounted, telescopic, foldable, trailed

From 3 to 12m, (3m on road)
& stand for liquid tank



535 rue Pierre Levasseur - CS 60263
44158 ANCENIS - FRANCE

T. +33 (0) 2 51 14 14 40

www.agrisem.com
agrisem@agrisem.com

#YellowTeam



Your Dealer: